

# CERTIFICATE OF LOCATION OF GOVERNMENT CORNER

EAST QUARTER \_\_\_\_\_ Corner of Section 8 , Township 107N , Range 39W

5th Principal Meridian, State of Minnesota, County of MURRAY

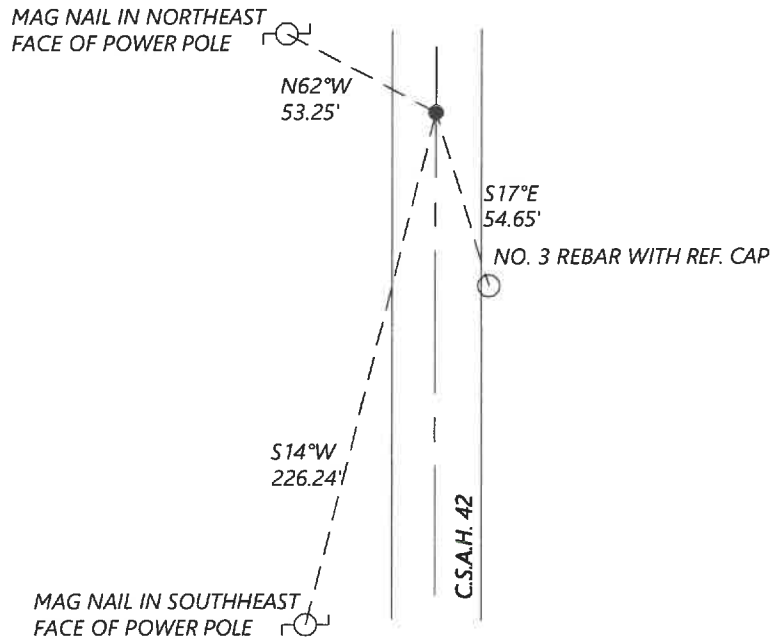
At the corner location shown on the sketch:

On 8/27/2020 found a NO. 4 REBAR WITHOUT CAP, FLUSH WITH ASPHALT  
DATE

left monument as found       lowered monument       removed monument (explain)

On \_\_\_\_\_ placed a \_\_\_\_\_  
DATE

### SKETCH OF REFERENCE TIES



N.T.S.

Statement of evidence for this corner location is on back of this page.

I hereby certify that this document was researched and prepared by me or under my direct supervision and that I am a licensed Land Surveyor under the laws of the State of Minnesota.

Signature [Handwritten Signature]

Date 6/16/2021 License No. 45874

Title:

- Land Surveyor       Professional Engineer
- County Surveyor       County Engineer

OFFICE OF THE COUNTY RECORDER

County of Murray

I hereby certify that this document was filed in the Co.

Recorder's office at \_\_\_\_\_ M. on the \_\_\_\_\_ day of \_\_\_\_\_ A.D. 20

County Recorder Karen Brown  
by JUN 22 2021, Deputy

DOCUMENT NO. \_\_\_\_\_

Statement of Evidence:

East Quarter Corner of Section 8, Township 107 North, Range 39 West, 5th Principal Meridian, Murray County, Minnesota.

1861 July, GLO Notes: Set post in mound.

1901 May, Survey record for Section 8 shows a field stone at the corner.

1978 April, Highway Department records show that they located a field stone and set a steel pin above the stone.

1999 May, CSAH 42 plans show the corner at PI station 4+030.965

2000 March, Highway Department records show that a  $\frac{3}{8}$ " rebar was placed above a steel pin with the following ties:

Nail & cap in pp	WNW	55.68ft
Rebar	W	103.14ft, 188.12ft, 284.24ft

2017 May, Highway Department records show that a No. 4 rebar was located with the coordinates:  
N: 187258.17 E: 558809.90

2019 December, A survey in Section 9 by Jesse Zieg shows that a  $\frac{1}{4}$ " rebar was found at the corner.

2020 September, Westwood Professional Services searched and found a No. 4 rebar at the corner. The coordinates fit with the 2017 Highway Department records. I accepted the found monument and set reference ties.

Analysis of the recovered data, field evidence and survey measurements, indicates that the monument found is the correct perpetuation of this corner. For additional information concerning this corner please contact Westwood Professional Services.